

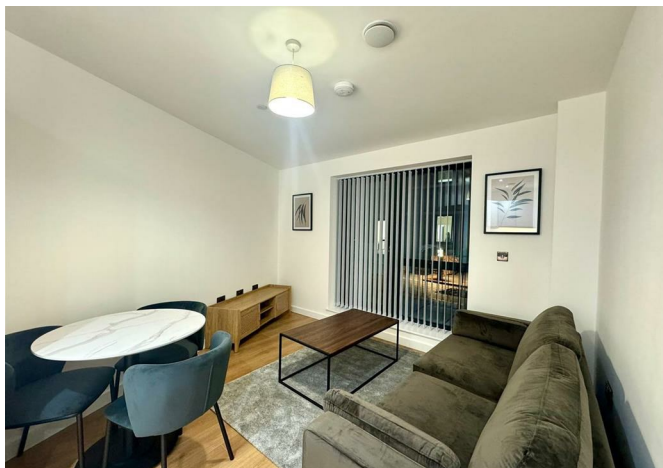
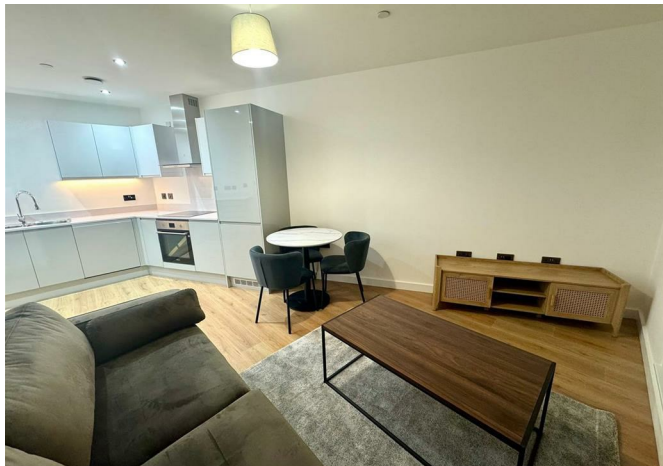


BRICK
MANAGEMENT + LETTINGS



Apartment 20 23 Legge Lane, Birmingham, B1 3LX

£1,275 Per month



Apartment 20 23 Legge Lane, Birmingham, B1 3LX

£1,275 Per month

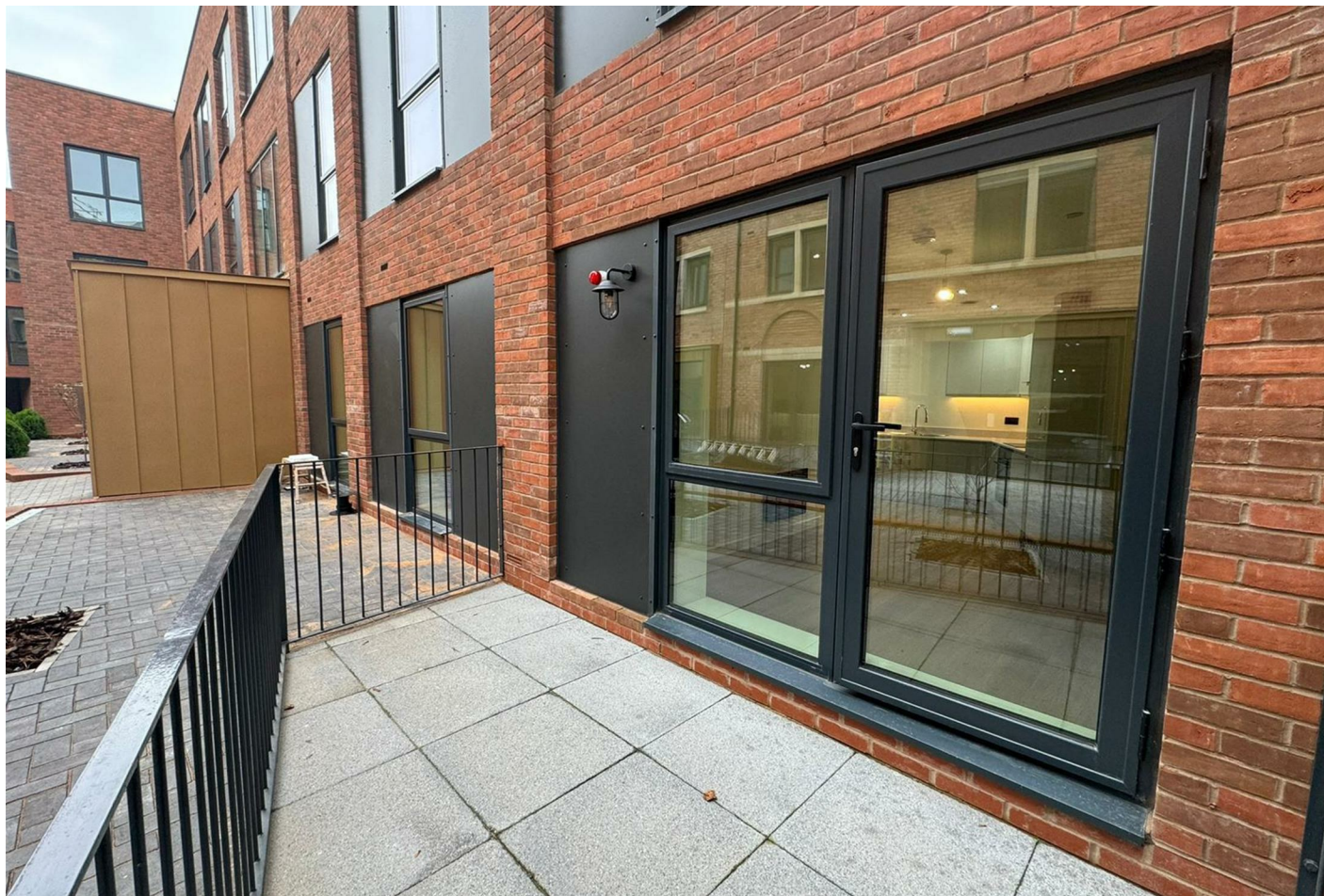
New to the market, this impressive ground floor two double bedroom apartment is located in the new Scholars Quarter development in the heart of the Jewellery Quarter, just a short walk from Birmingham city centre and numerous local amenities.

The property benefits from a long entrance hallway with ample storage, leading into a large open plan living room/dining area with contemporary wooden flooring, access to a private patio area and a stylish grey kitchen with integrated appliances. Also off the hallway are two spacious double bedrooms which are both carpeted, the master benefiting from a luxury ensuite shower room and there is a further family sized bathroom to the same standard.

Offered on a furnished basis, with secure entry-phone access and neutral decoration throughout.

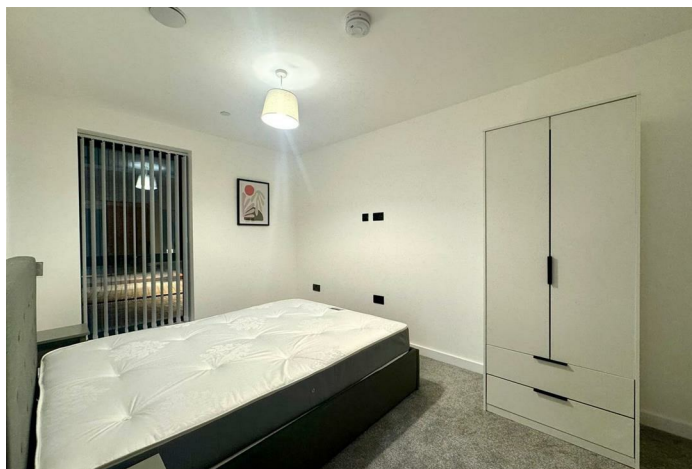
* Sorry, no allocated parking with this property. *

Description



Situation

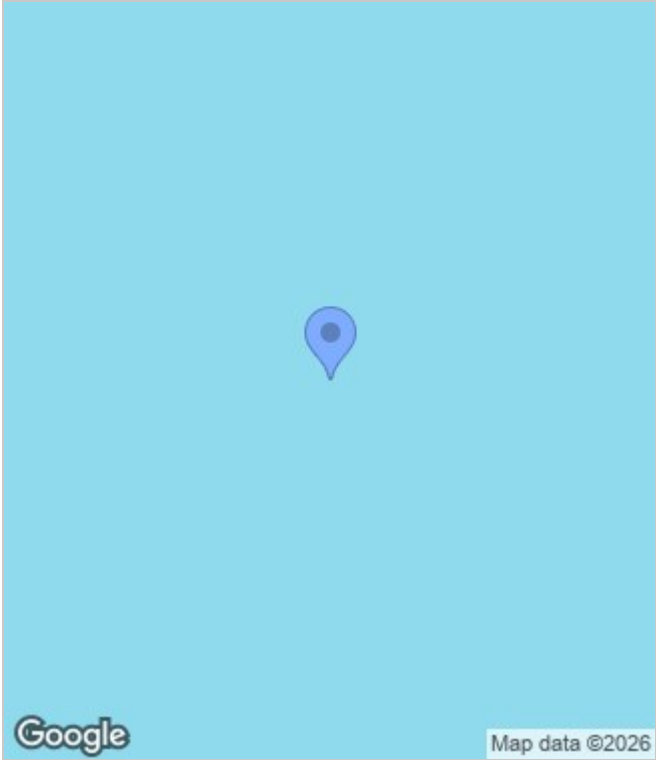
Furnished
Council Tax Band: C
Available: 23rd February 2026



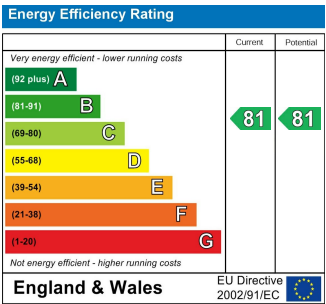
Floor Plans



Area Map



Energy Performance Graph



These particulars, whilst believed to be accurate are set out as a general outline only for guidance and do not constitute any part of an offer or contract. Intending purchasers should not rely on them as statements of representation of fact, but must satisfy themselves by inspection or otherwise as to their accuracy. No person in this firms employment has the authority to make or give any representation or warranty in respect of the property.